

# Infrastructure As A Service exclusive pilot offer

Fully managed Remote Services Information Kiosks are now available in a flexible pilot offer for 90 – 180 days.

Offer includes hardware, custom software, monitoring, and basic support

- Relocatable
- ATDW integration
- Mobile Phone Charging
- Wifi / Starlink Connectivity
- Emergency alerts
- Optional AI functionality



## Powered entirely by Wind and Sun

Utilising new, leading edge Sodium Ion battery technology for extreme temperature stability and operation.



## Emergency Alerts and Warnings

Emergency alerts and warnings including full screen and external warning lights, for bushfires, tsunamis, cyclones, road closures, floods and more and full local weather recording and reporting



## Transportable and Relocatable

Designed and built in Australia combining local materials and manufacturing skills with engineering know how and best of breed components from around the world. Set up in deployed in half a day.



## Free Wifi

Free wifi connectivity no matter where the kiosk is located with built in resilience measures including multiple SIM and satellite/Starlink provider options.



## Proximity Awareness

Awareness of the kiosk's location with the ability to wake up and interact with visitors automatically when approached, including Ai driven machine to human interface. Configurable and customisable using our Device Content Management Platform.



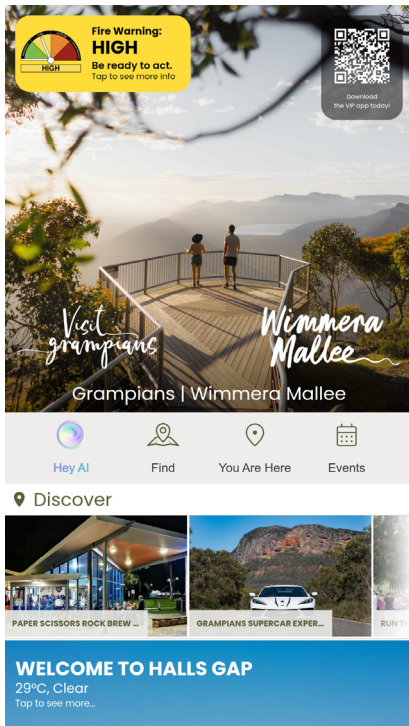
## Mobile Phone Charging

Powered by sun and wind

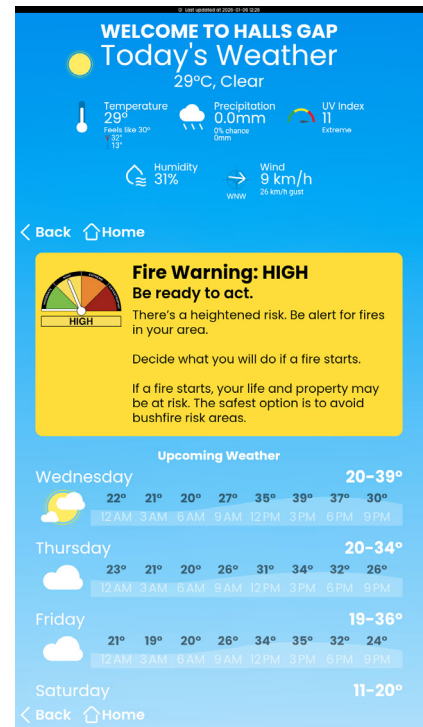
[www.specialistapps.com](http://www.specialistapps.com)

# Specialist Apps

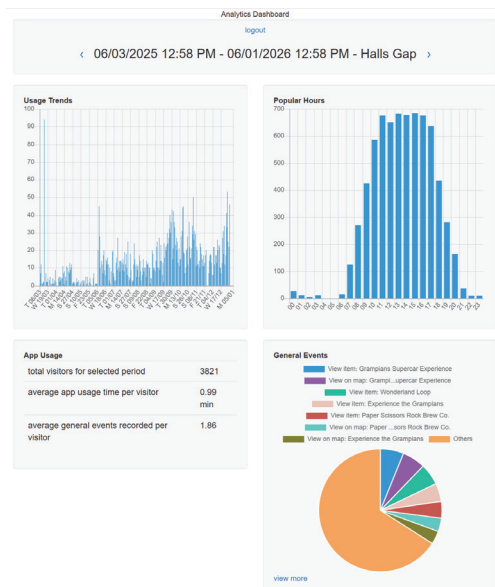
## Infrastructure As A Service exclusive pilot offer



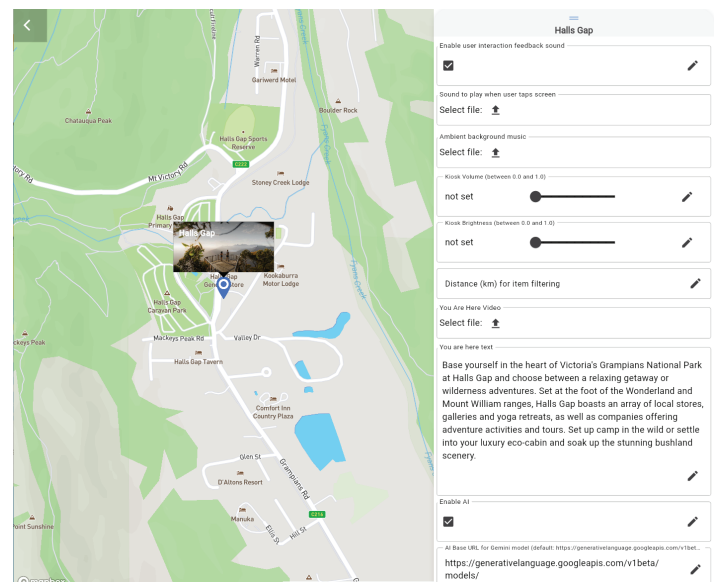
An example of a typical home view for the kiosk software. On this screen the user will have access to weather warnings, highlighted local ATDW content sorted by distance, and single touch links to other sections of the kiosk software.



If the user taps on a weather alert or the weather panel they will be presented with this screen which features advice on alerts and general weather information for the area.



Usage data and analytics are automatically collected for each kiosk and are available for review at any time. This data includes peak usage periods and insights into which software sections and ATDW content are accessed most frequently.



The Device Content Management Platform allows for customisation of software content as well as a vast array of hardware settings that can be pushed out to the kiosk at anytime.

## Infrastructure As A Service exclusive pilot offer

### Tourism & Visitor Economy

Council KPI	Kiosk Outcome
Increase visitor numbers	✓ Always-on digital visitor access points in high-traffic and remote locations
Improve visitor experience and satisfaction	✓ Real-time maps, attractions, events, and wayfinding
Increase length of stay	✓ Promotion of nearby experiences, accommodation, and itineraries
Increase visitor spend	✓ Direct exposure and referrals to local tourism operators and businesses
Improve accessibility of visitor services	✓ 24/7 access without reliance on staffed visitor centres

### Economic Development & Local Business Support

Council KPI	Kiosk Outcome
Support local businesses and SMEs	✓ Low-cost, equitable promotion for local businesses
Increase business visibility	✓ Centralised platform highlighting local products and services
Encourage place activation	✓ Visible smart infrastructure supports activation and investment confidence
Reduce service delivery costs	✓ No ongoing staffing requirements compared to physical centres

### Service Accessibility & Equity

Council KPI	Kiosk Outcome
Improve access to council services	✓ Extends council services into smaller towns and public spaces
Reduce geographic and time barriers	✓ Eliminates reliance on office hours and travel
Support inclusive service delivery	✓ Serves residents, visitors, and businesses equally

## Infrastructure As A Service exclusive pilot offer

### Emergency Management & Public Safety

Council KPI	Kiosk Outcome
Timely emergency communications	✔ Highly visible emergency alerts and warnings
Improve visitor experience and satisfaction	✔ Real-time fire danger ratings, flood warnings, heat alerts
Clear evacuation and safety messaging	✔ Central public information point during emergencies

### Economic Development & Local Business Support

Council KPI	Kiosk Outcome
Build resilient communications channels	✔ Additional layer alongside mobile, radio, and online systems
Reduce single-point communication failure	✔ Maintains public messaging during outages or congestion
Support recovery communications	✔ Displays service updates, recovery information, and business reopening

### Data, Insights & Sustainability

Council KPI	Kiosk Outcome
Evidence-based decision making	✔ Usage analytics on visitor behaviour and service demand
Reduce environmental impact	✔ Lower reliance on printed materials
Improve operational efficiency	✔ Centralised, scalable digital infrastructure